

Intermodal Terminal of Trieste (TRS)



As with most intermodal terminals, TRS operates 24/7. So, lighting is critical. Traditional High Pressure Sodium lighting systems are costly to maintain and offer poor colour rendering for CCTV systems. Another reason for switching to LED lighting is to reduce neighbourhood light pollution. TRS asked us to upgrade their lighting to make sure it was delivering exactly what was needed for an intermodal terminal.

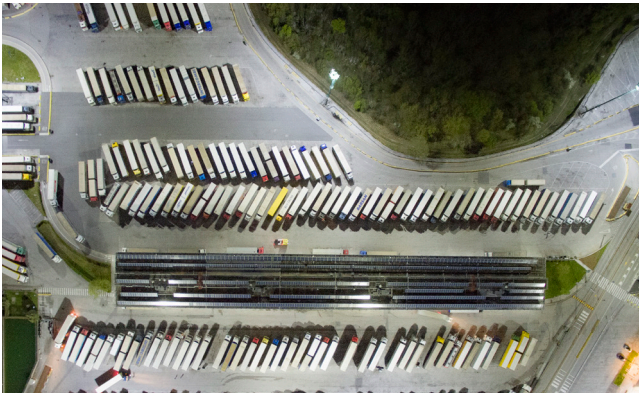
The challenge

Traditional High Pressure Sodium lighting systems are costly to maintain and offer poor colour rendering for CCTV systems. Another reason for switching to LED lighting is to reduce neighbourhood light pollution. TRS asked us to upgrade their lighting to make sure it was delivering exactly what was needed for an intermodal terminal.

At a glance

Sector: Logistics
Customer: TRS Intermodal Terminal
Location: Italy
Working area: 130,000m²
Hours of Operation: 24/7
Project date: 2016
LED floodlights installed: 47

Type: Titan Series
Mast Height: 37.5m
Energy Savings: 73%



Our solution

We replaced 1,000 sodium projectors with 455W LED technology. And the number of units was cut from 60 to 47 too. The result? High uniform light levels across the whole yard – without any light pollution for the neighbours.

Before and after technical comparison

	SODIUM	LED
Number of projectors	60	47
Nominal power for single appliance	1,000W	455W
Absorbed power (measured data)	1,315W	455W
Total power absorbed	81.5 kW	21.3 kW
Energy consumption per year	357,100 kWh	93,600 kWh
Colour temperature	2,300K	5,700K
Colour rendering index	30	70
Average light level	18 Lux	20 Lux
Uniformity	0.19	0.28
Energy savings	-	73%