

# Genova Airport (GOA)



Officially known as Aeroporto Cristoforo Colombo, after Christopher Columbus, GOA is the most important airport in Liguria – in northwest Italy. Built on an artificial peninsula, GOA serves the city and Port of Genoa. And, as a tourist gateway to the famed Italian Riviera, it's the 21st busiest airport in Italy.

## The challenge

The old sodium floodlight system at GOA wasn't meeting all the International Civil Aviation Organisation (ICAO) requirements it had to.

So, as part of an ongoing overall airport upgrade, the lighting system was scheduled to be replaced in two phases. This covered lighting masts, up to 34m, both air and landside. The lighting for the taxiway also needed to be improved so it could provide 10 Lux along its 275m length – a challenging distance when taking into asymmetric optics.

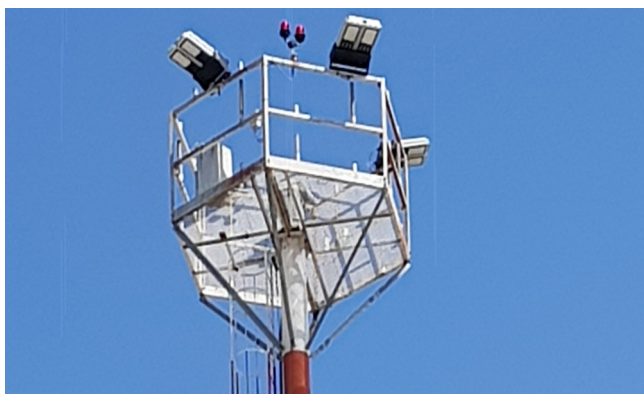
The ICAO regulations also stipulated that the light source, in addition to delivering the required Lux and Uniformity values, had to come from two directions.

As the airport was next to the sea, the corrosive effects of the environment needed to be eliminated too.

## At a glance

**Sector:** Aviation  
**Country:** Italy  
**Customer:** GOA  
**Number of passengers:** 1,450,000  
**Runways:** 1  
**Stands:** 33

**Average aircraft movements:** 20,645  
**Project date:** May/June 2017  
**LED floodlights installed:** 115 + 24  
**Type:** Titan 720  
**Lux average values:** 0.25 needed. 0.4 delivered



## Our solution

Tried and tested in airports all over the world, many with the same environmental issues, our Titan Series was the chosen solution for GOA.

Delivering the maximum level of performance possible for high mast and large area lighting, our in-house experts designed the Series to meet all ICAO regulations. And, during the planning for this specific application, the need to hit the apron with light from two sources was built into the overall solution. Plus, the Series' robust stainless steel construction has been proven to withstand the worst environmental conditions – again making it the perfect choice for GOA.

## Anything Else

After completing the 2017 part of the lighting upgrade, we were asked by GOA to take on the second phase. This involved adding four extra high masts with Titan luminaires. This was completed in February 2019.

## Technical Data

	WITH LED
Number of projectors	115 + 24
Nominal power for single appliance	705 W
Absorbed power (measured data)	705 W
Total power absorbed	81075 W + 16920 W
Energy consumption per year	Tot 429218.1 kWh
Colour temperature	5000 K
Colour rendering index	CRI > 70
Average light level	20+ Lux
Uniformity	>0.4